

J.L.N. College, Chakradharpur

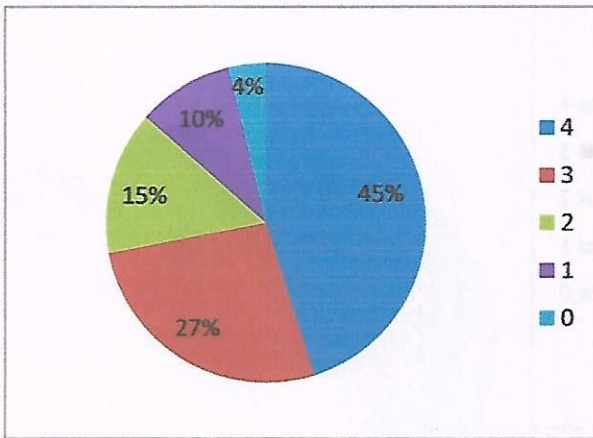
STUDENT FEEDBACK

Year 2022 – 2023

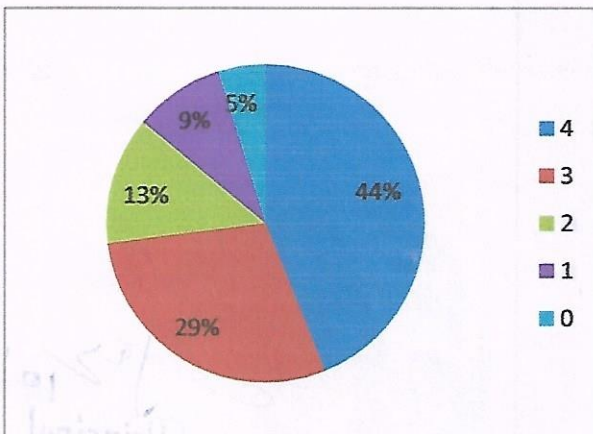
We have rated the questions in a scale of E to A where E = Very poor; D = Poor; C = Satisfactory; B = Good; A = Excellent. The feedback is calculated in the numerical scale of 0 – 4 where 0 stands for E, i.e., Very poor and 4 stands for A, i.e., Excellent.

Curriculum

1) Extent of syllabi covered in the class

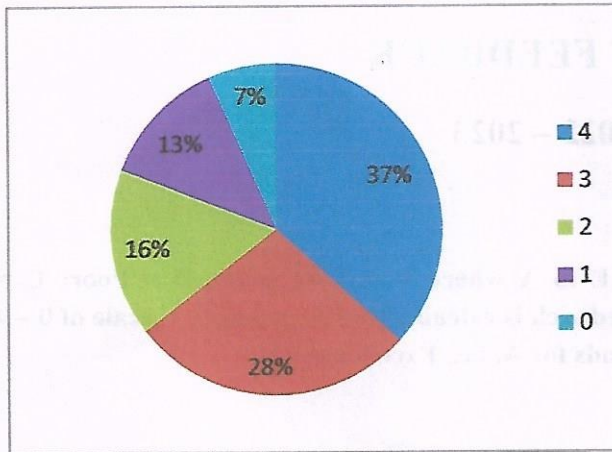


2) Overall experience with internal assessment

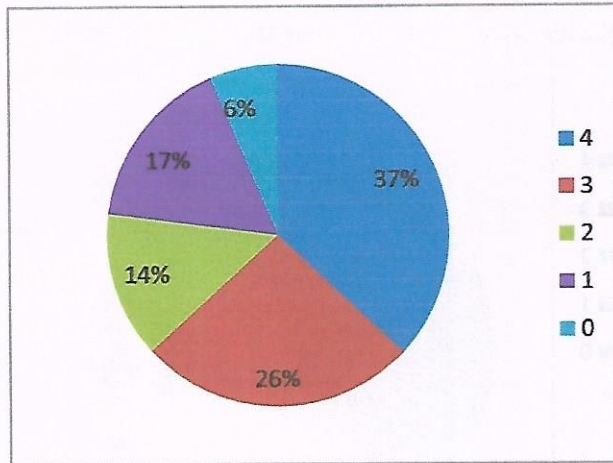


[Signature]
Principal
Jawahar Lal Nehru College
Chakradharpur
18/01/2024

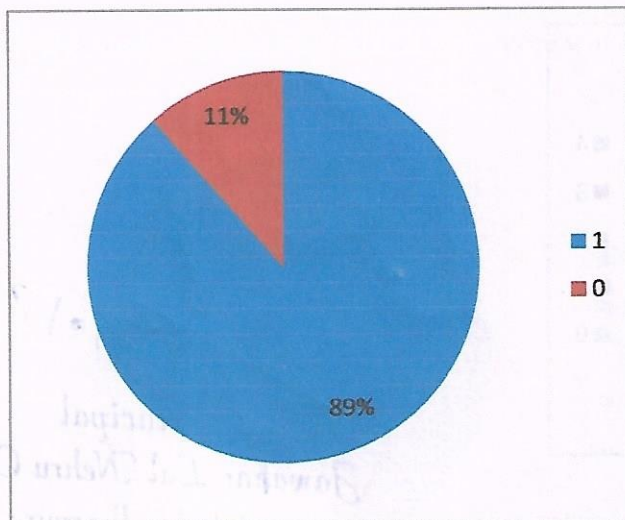
3) The college integrate theory and practical classes



4) Opportunity to participate in activities beyond the classroom

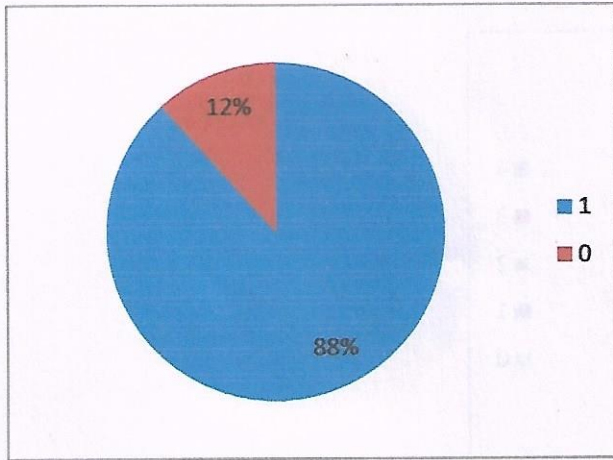


5) Did you find the assessments (tests, quizzes, assignments) fair and appropriate? (Yes = 1 and No = 0)



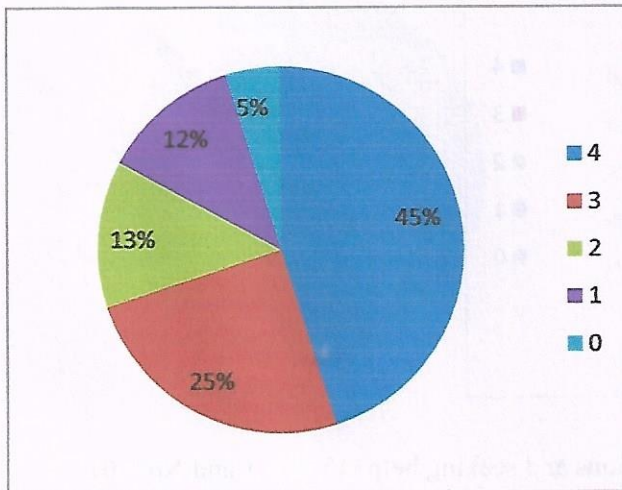
[Signature]
10/8/2027
Principal
Jawahar Lal Nehru College
Chakradharpur

6) The course/programme offers sufficient number of choices (Yes = 1 and No = 0)

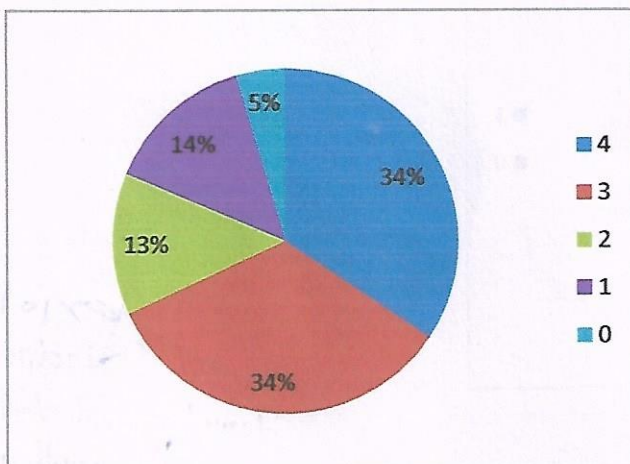


Academic performance and ambience of the institution

7) Quality of lectures

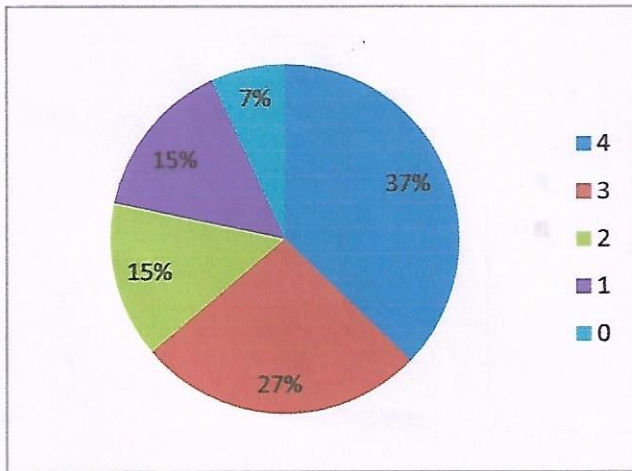


8) The teacher's presentation of the concepts through examples and applications

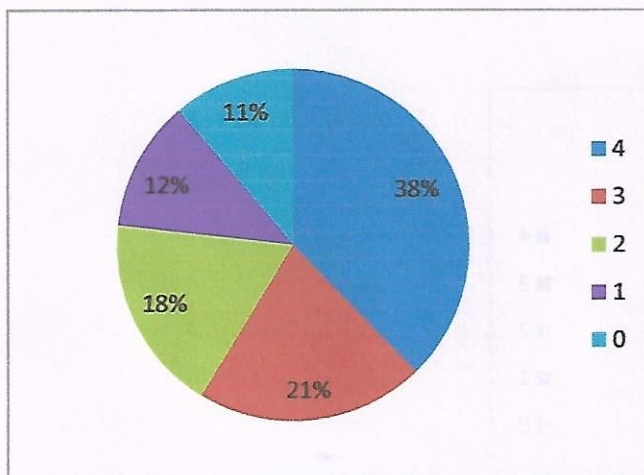


[Signature]
10/18/2024
Principal
Jawahar Lal Nehru College
Chakradharpur

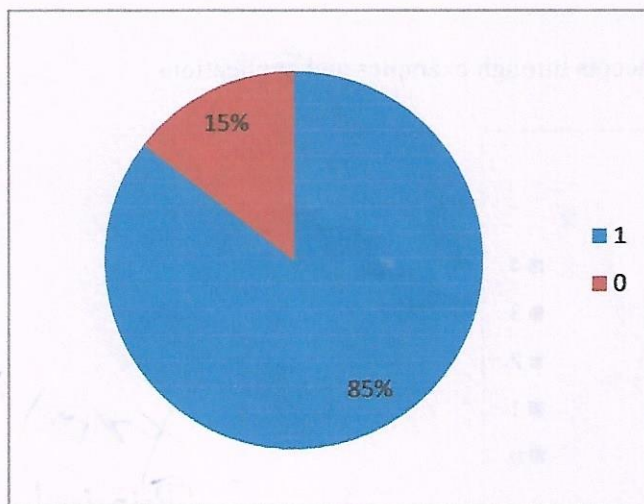
9) The role of the Institution in encouraging participation in sports and extra-curricular activities.



10) Support services (e.g., counselling, tutoring etc.)

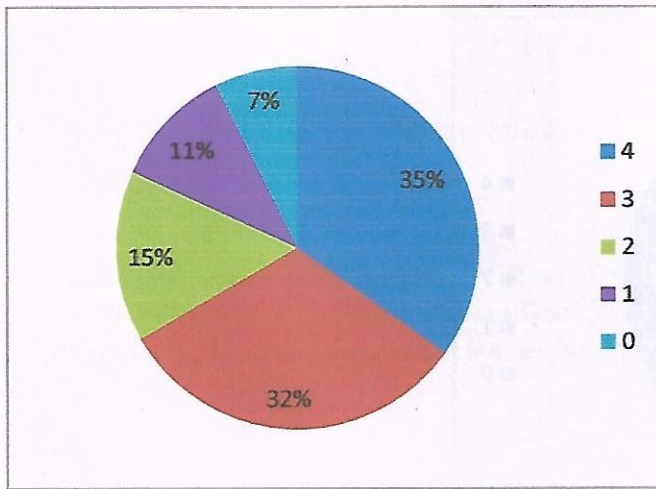


11) Did you feel comfortable asking questions and seeking help? (Yes = 1 and No = 0)

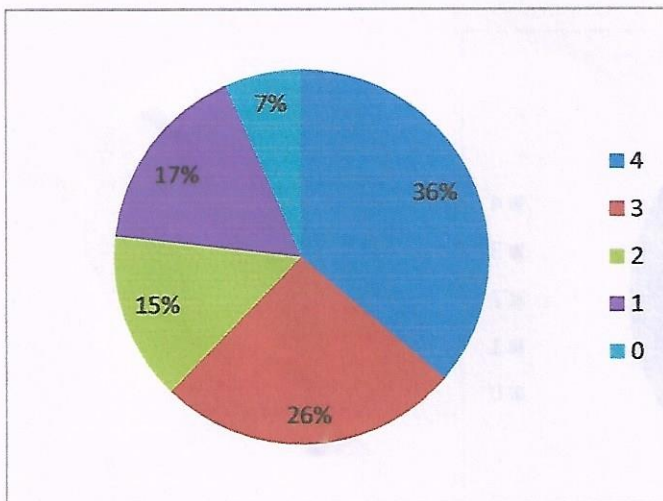


10/18/2024
Principal
Jawahar Lal Nehru College
Chakradharpur

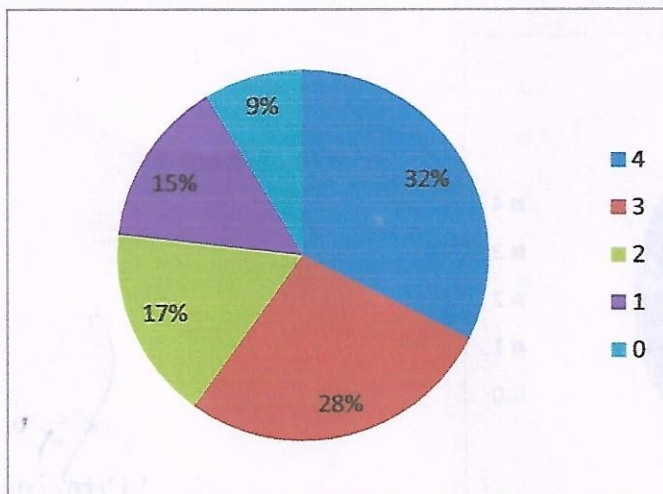
12) The role of the Institution in redressal of students grievances



13) The role of the Library of the College in providing books and study materials

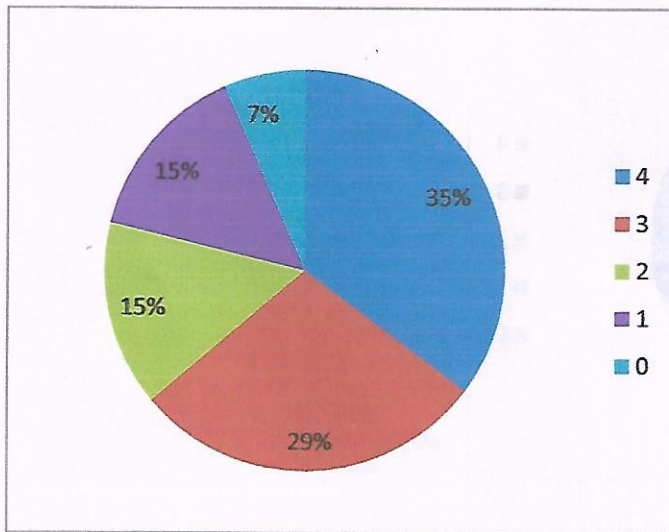


14) Availability of Laboratory Equipment

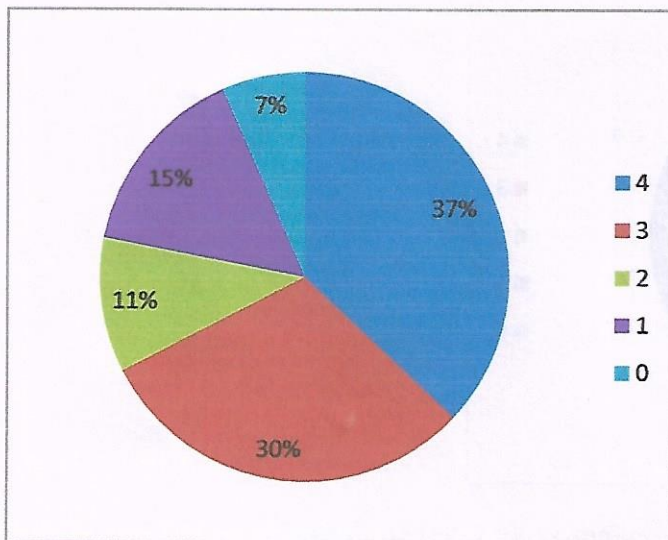


[Signature]
Principal
Jawahar Lal Nehru College
Chakradharpur

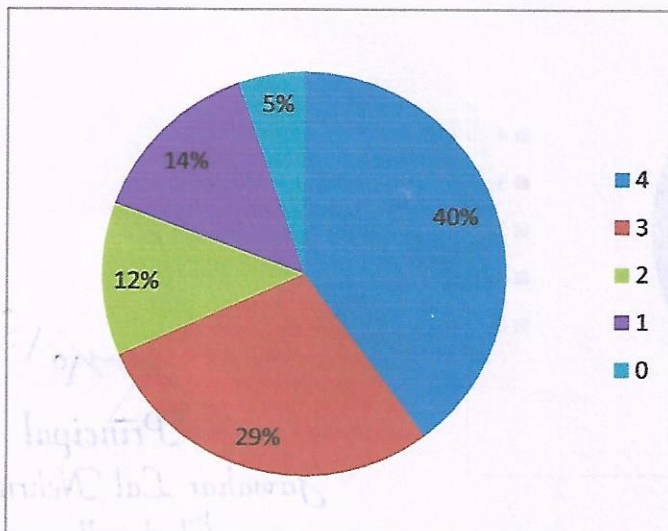
15) Rate the institutional infrastructure for providing Peaceful and Calm Environment



16) Rate the institutional standard of Hygiene and Cleanliness



17) How would you rate your overall experience with J. L. N. College, Chakradharpur



[Signature]
Principal
Jawahar Lal Nehru College
Chakradharpur

J.L.N. College, Chakradharpur

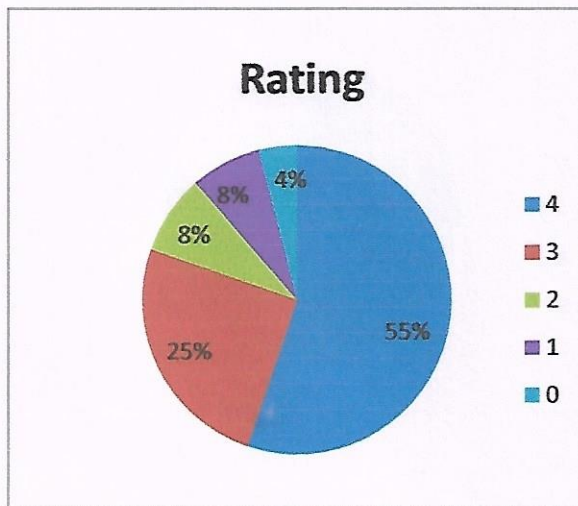
STUDENT FEEDBACK

Year 2021 – 2022

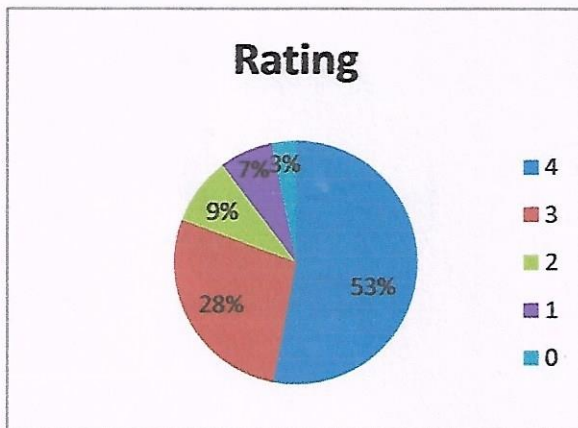
We have rated the questions in a scale of E to A where E = Very poor; D = Poor; C = Satisfactory; B = Good; A = Excellent. The feedback is calculated in the numerical scale of 0 – 4 where 0 stands for E, i.e., Very poor and 4 stands for A, i.e., Excellent.

Curriculum

1) Extent of syllabi covered in the class

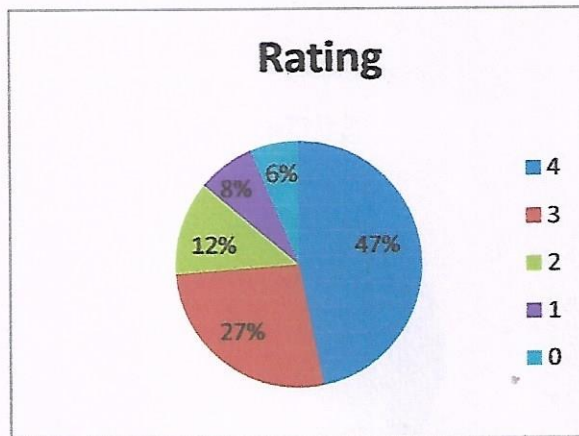


2) Overall experience with internal assessment

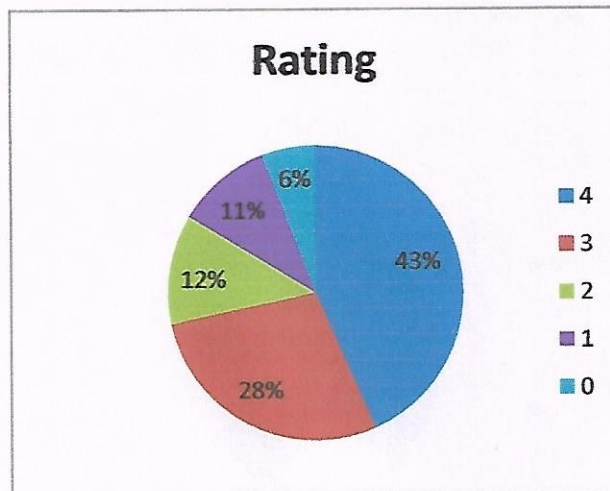


[Signature]
10/8/2024
Principal
Jawahar Lal Nehru College
Chakradharpur

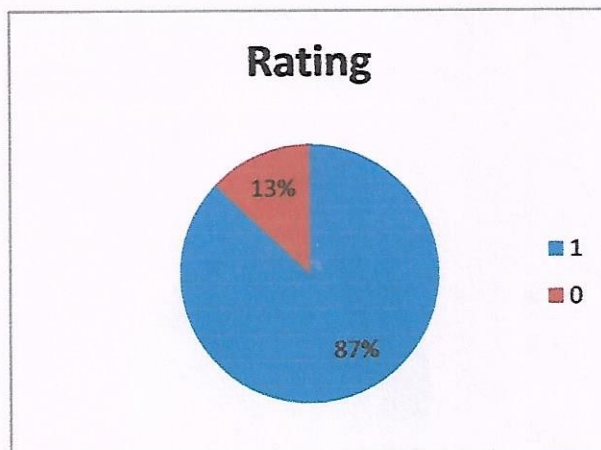
3) The college integrate theory and practical classes



4) Opportunity to participate in activities beyond the classroom



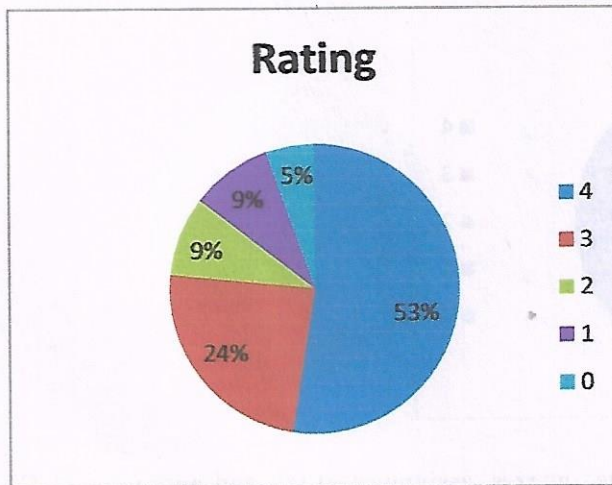
5) The course/programme offers sufficient number of choices (Yes = 1 and No = 0)



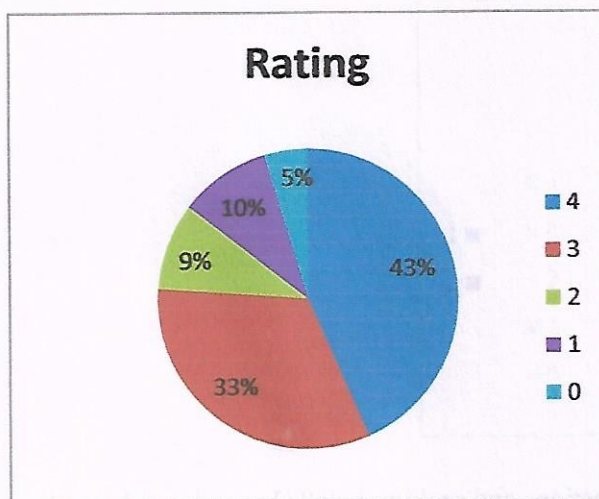
[Signature]
20/8/2024
Principal
Jawahar Lal Nehru College
Chakradharpur

Academic performance and ambience of the institution

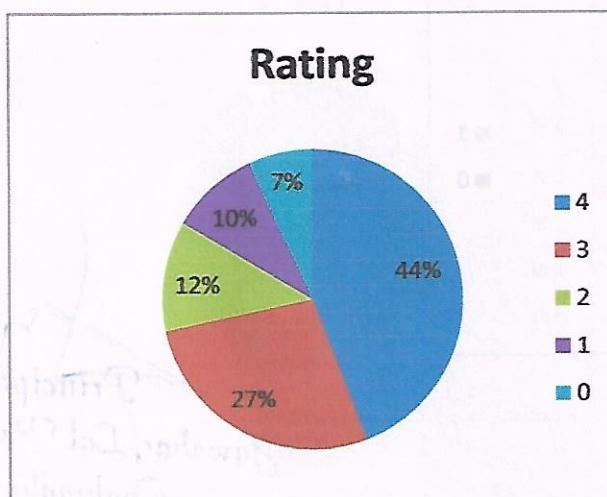
1) Quality of lectures



2) The teacher's presentation of the concepts through examples and applications



3) The role of the Institution in encouraging participation in sports and extra-curricular activities.

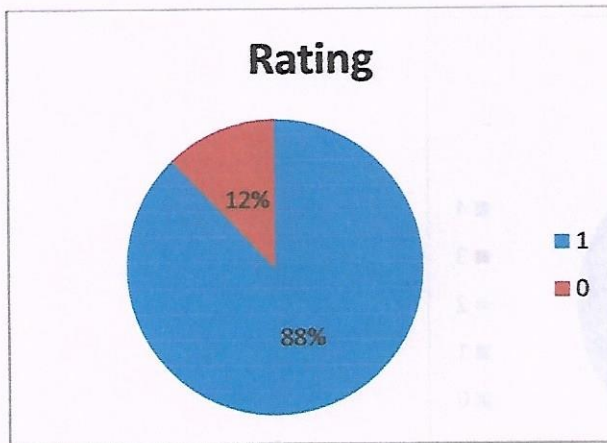


[Signature]
Principal
Jawahar Lal Nehru College
Chakradharpur

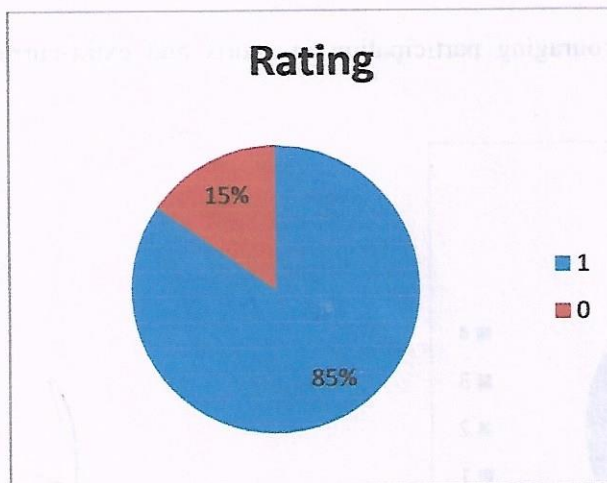
4) Support services (e.g., counselling, tutoring etc.)



5) Did you find the assessments (tests, quizzes, assignments) fair and appropriate? (Yes = 1 and No = 0)

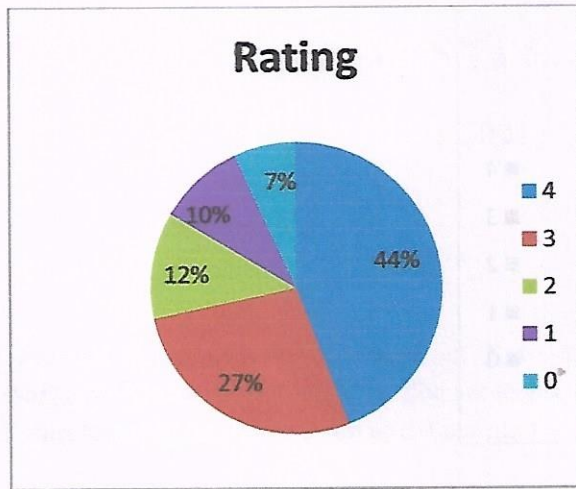


6) Did you feel comfortable asking questions and seeking help? (Yes = 1 and No = 0)

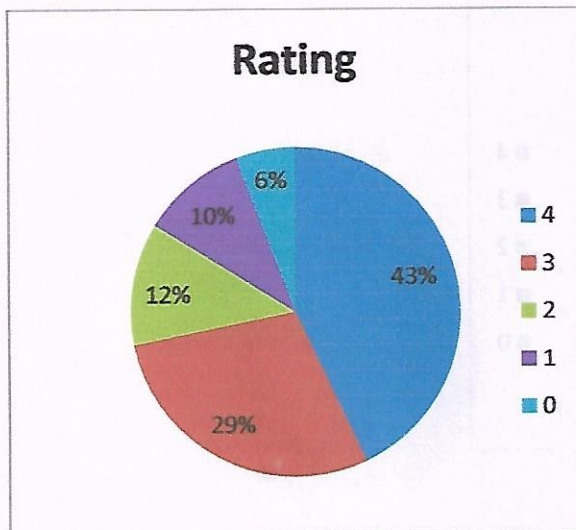


[Signature]
10/18/2027
Principal
Jawahar Lal Nehru College
Chakradharpur

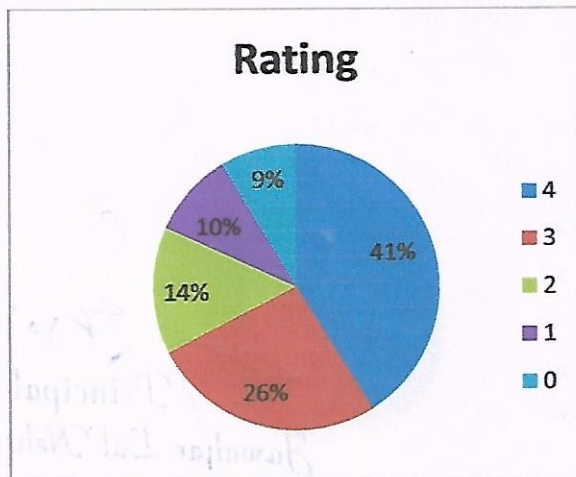
7) The role of the Institution in redressal of students grievances



8) The role of the Library of the College in providing books and study materials

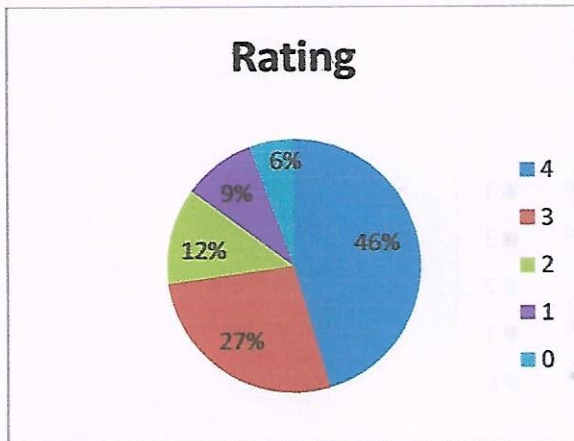


9) Availability of Laboratory Equipment

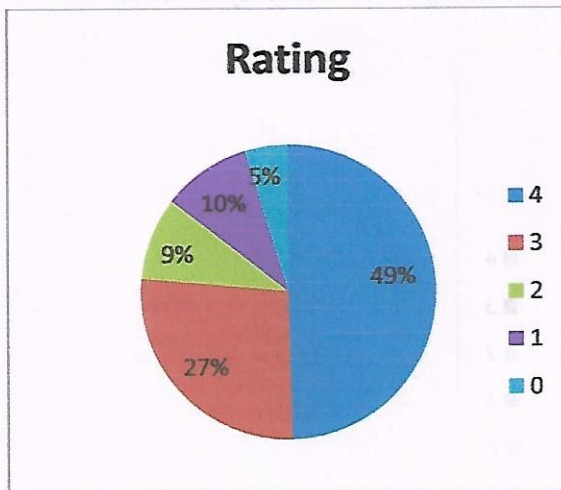


[Signature]
Principal
Jawahar Lal Nehru College
Chakradharpur

10) Rate the institutional standard of Hygiene and Cleanliness



11) How would you rate your overall experience with J. L. N. College, Chakradharpur



[Signature]
21/08/24
Principal
Jawahar Lal Nehru College
Chakradharpur

J. L. N. College, Chakradharpur

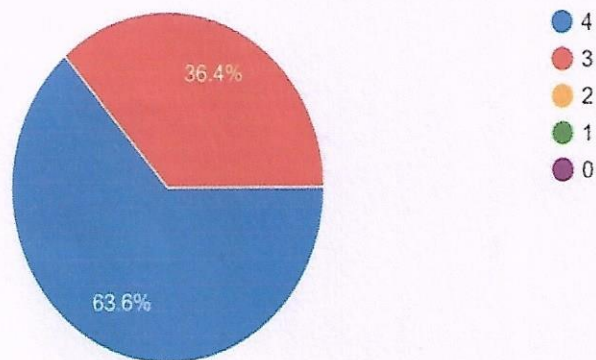
TEACHER'S FEEDBACK

Year 2021 - 2022

We have rated the questions in a scale of E to A where E = Very poor; D = Poor; C = Satisfactory; B = Good; A = Excellent. The feedback is calculated in the numerical scale of 0 – 4 where 0 stands for E, i.e., Very poor and 4 stands for A, i.e., Excellent.

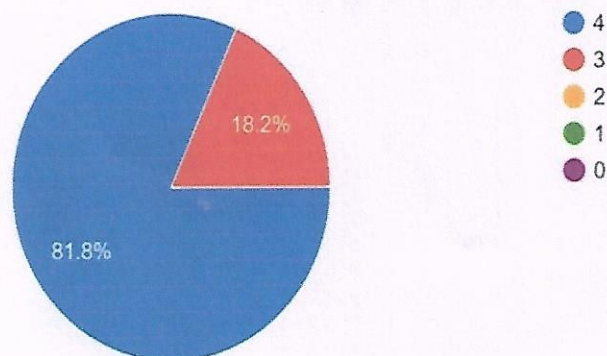
The syllabus is contemporary and well designed

11 responses



The aims and objectives of the syllabus are clear to the teachers and students.

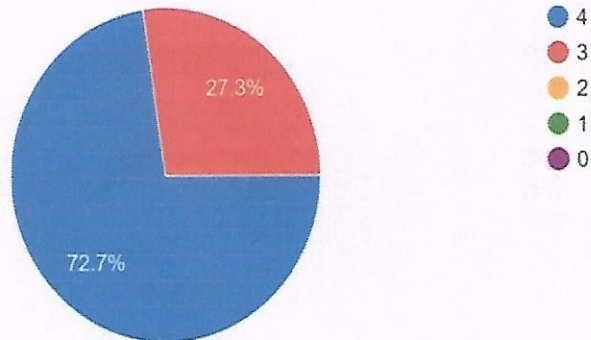
11 responses



[Signature]
10/8/2021
Principal
Jawahar Lal Nehru College
Chakradharpur

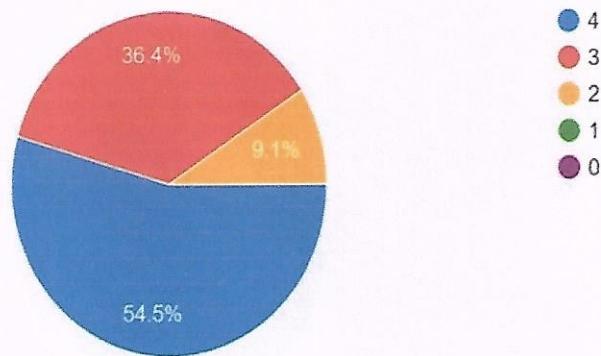
The curriculum is effective in widening the knowledge of the students

11 responses



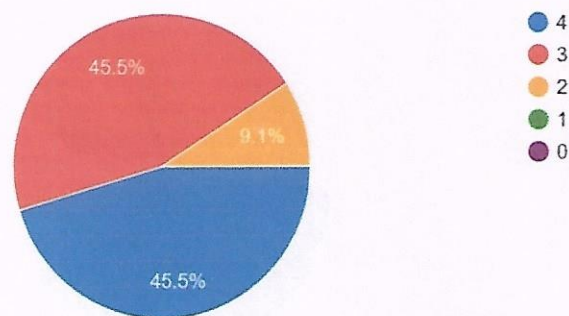
Give your rating on the adequacy of textbooks and references books prescribed in the syllabus

11 responses



Rate on whether the syllabus can be completed within the stipulated time --

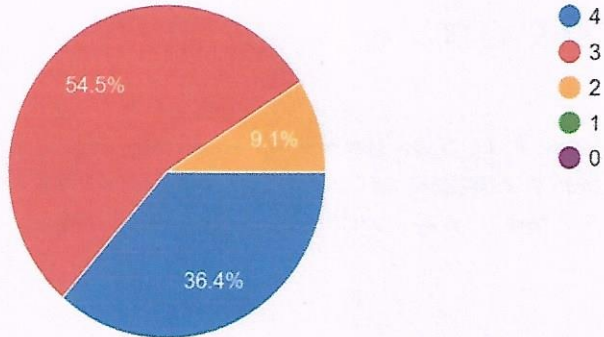
11 responses



A. S. 18/2024
Principal
Jawahar Lal Nehru College
Chakradharpur

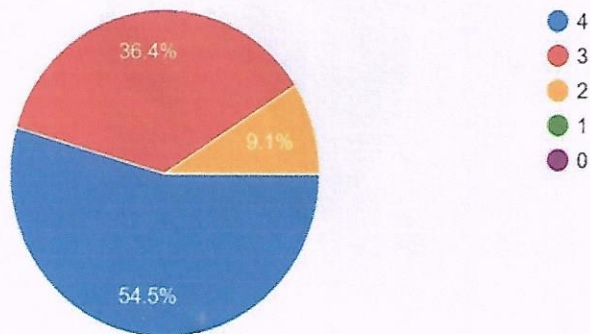
Give your rating regarding the effectiveness of the syllabus in terms of creativity and job opportunity.

11 responses



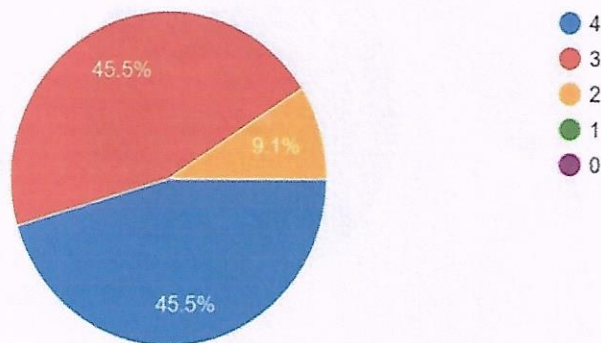
How far the syllabus includes experimental/practical input

11 responses



Give your rating on overall class environment

11 responses



(Signature)
Principal
Jawahar Lal Nehru College
Chakradharpur